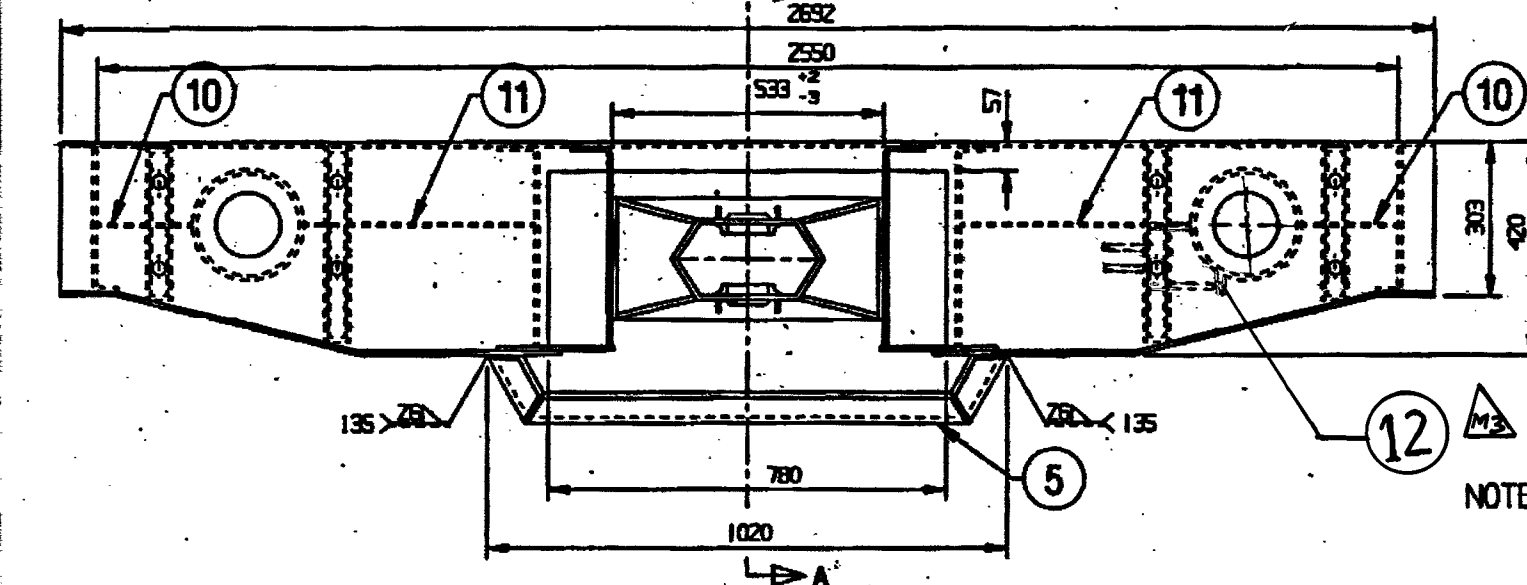


ALT.NO	ALT.DATE	ZONE	ALTERATIONS	AUTHORITY
a	20/01/2005	F-11	1. DRG. NO. OF ITEM-4 REVISED AND DRG. UPDATED.	MD050006
M1	22/5/15	-	CUT OUT 120 X 50 ADDED IN DRG. VIEW UPDATED IN DRG. & LOCATION DIM. 40, 50 ADDED ECN.NO. 90000077.	DR MD
M2	6/1/18	-	NOTE 2 DELETED & 3,4 ADDED. ECN.NO. 84900010	D.S SMR.
M3	15/9/18	-	IN B/M & DRG P.12 ADDED ECN NO. 84900032	DR MD
M4	20/5/19	-	IN DRG CUT OUT 50X120 DELETED ECN.NO. 84900057	DR MD



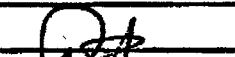



~~2. THIS PART TO BE COLD PHOSPHATED AND
APPLY ONE COAT OF RED OXIDE ZINC
CHROMATE PRIMER TO IS: 2074-92.~~

3. ASSY. TO BE SHOT BLASTED / GRIT
BLASTED AND GIVEN ONE COAT OF
PU PRIMER TO RDSO SPECN. MSSC/PCN/100/2009

4. FOR OUTSOURCING, THE AREA MARKED '#' SHOWN TO BE MASKED BEFORE APPLYING PU PRIMER TO AVOID HAZARDOUS FUMES DURING WELDING.

WELD
NIL

12	CLOSING PLATE	1	MEMU/TC-1-2 -004	NIL	ITEM-18
11	RIB	2	ICF/STD-1-2 -003	NIL	ITEM-16
10	RIB	2	ICF/STD-1-2 -003	NIL	ITEM-13
9	CLOSING PLATE 8X286X2550	1	R101501008	IRS-M-41-97	Gyr-1
8	CLOSING PLATE 8X286X2466	1	R101501008	IRS-M-41-97	Gyr-1
7	PLATE	2	MEMU/TC-1-2 -004	NIL	ITEM-20
6	BACKET FOR CENTERING DEVICE	1	MEMU/TC-1-2 -004	NIL	COL-IV
5	SUPPORTING BEAM	1	EMU-1-2-021	NIL	COL-II
4	TUBE	2	ET12116	NIL	NIL
3	COUPLING BEAM COMPLETE	1	ET12104	NIL	NIL
2	INNER HEAD STOCK COMPLETE	1	ET12103	NIL	NIL
1	OUTER HEAD STOCK BEAM COMPLETE	1	ET12102	NIL	NIL

WELD LENGTH	ITEM	DESCRIPTION & DIMENSIONS		OPASSLY	DETAIL DRG	MATL. & SPEC.	REMARKS			
NIL	M.	GROUP	UNDERFRAME		SUPERSEDES: ET12100 ALT NIL					
WEIGHT	FILE	\\NAS\SHELL\PRDP\ET12100A.PRT (2D)								
445.00	KG	HEAD STOCK COMPLETE FOR MEMU/TC2 P.A END				SCALE	SSE/REG			
S.AREA	1:15					CHD				
NIL	M ²						DRN			
LENGTH /-B+A										
1.186	M	RAIL COACH FACTORY, KAPURTHALA				REF.DRG.No.	MEMU/TC2-1-2-201 COL-1 ALT-b			
WIDTH / THICK	INDIAN RAILWAYS STANDARD					PL NO.		NIL		
2.692						M	DRG.NO.		ET12100	
HEIGHT					ALT.		SIZE/A2		SHEET	1/1
0.545										

ANY MANUAL ALTERATION SHALL AUTOMATICALLY RENDER THIS DRAWING INVALID.

CDE	ALT.	9	\$
-----	------	---	----

1